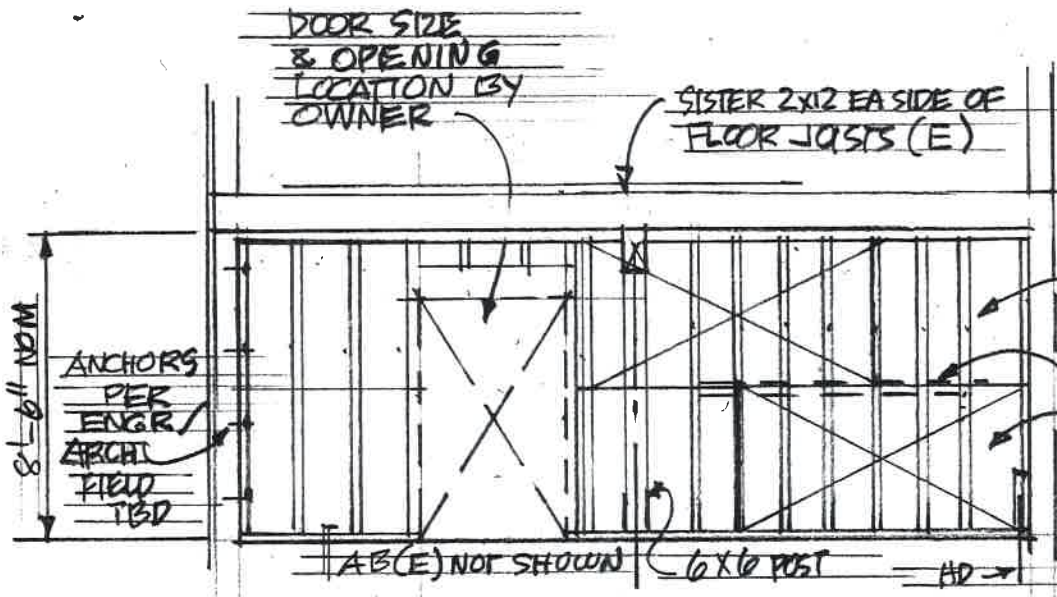




*Lawrence B. Karp*



3X6 STUDS @ 16" TYP.

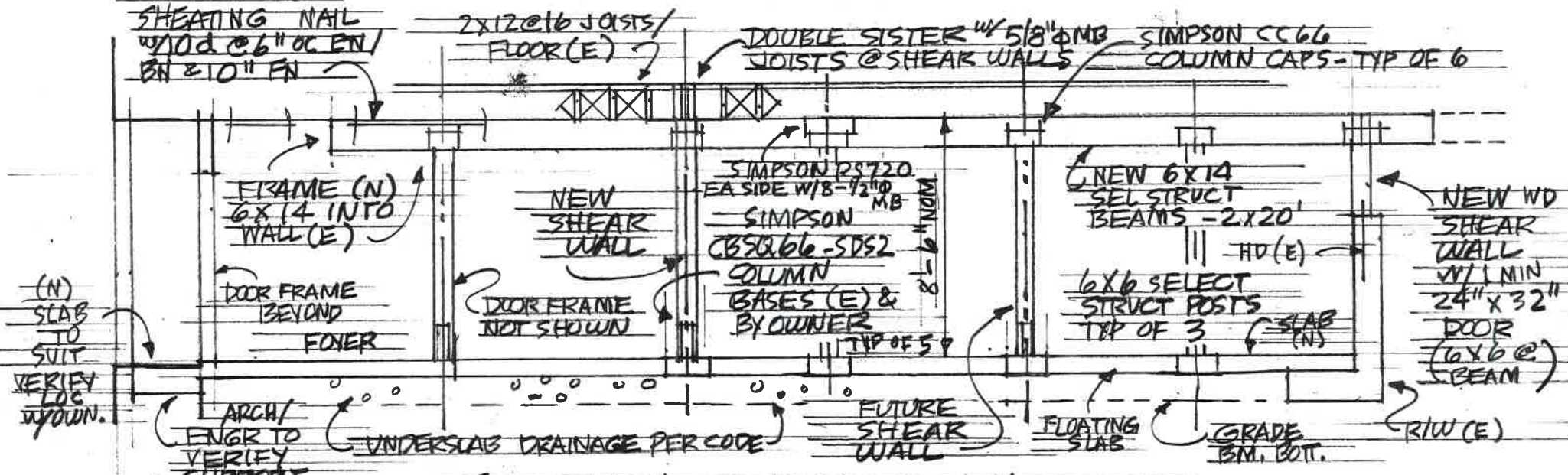
NAIL #10 @ 2" OC E & F

BLOCK ALL PWD EDGES

25/32" STRUCT I PWD APPLY W/ LONG DIMENSION ACROSS STUDS (TYP)

CUT OPENINGS FROM FULL SHEET - PWD BOTH SIDES OF STUDS

TYPICAL 12" PWD CIG SHEAR WALL ELEVATION - LOOKING NORTH



SECTION @ NEW BEAM - LOOKING EAST

2175 GREEN, SF (SCHEMATIC)

13K 8 APR 2012 (SHEET 2 OF 2)

8 MAY 2012