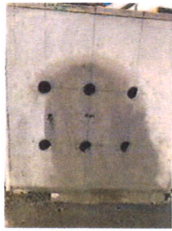


Norcon performed the coring of the panel using ACI 506.2-4.



The following are the results and grading of the specimens based on section 1.7

Nozzleman #1

LOCATION	GRADE	PASS / FAIL
Core #1	G1.5	PASS
Core #2	G1.5	PASS
Core #3	G1	PASS

Nozzleman #2

LOCATION	GRADE	PASS / FAIL
Core #4	G1	PASS
Core #5	G1.5	PASS
Core #6	G1	PASS

Core #1



Core #2



Core #3



Core #4



Core #5



Core #6