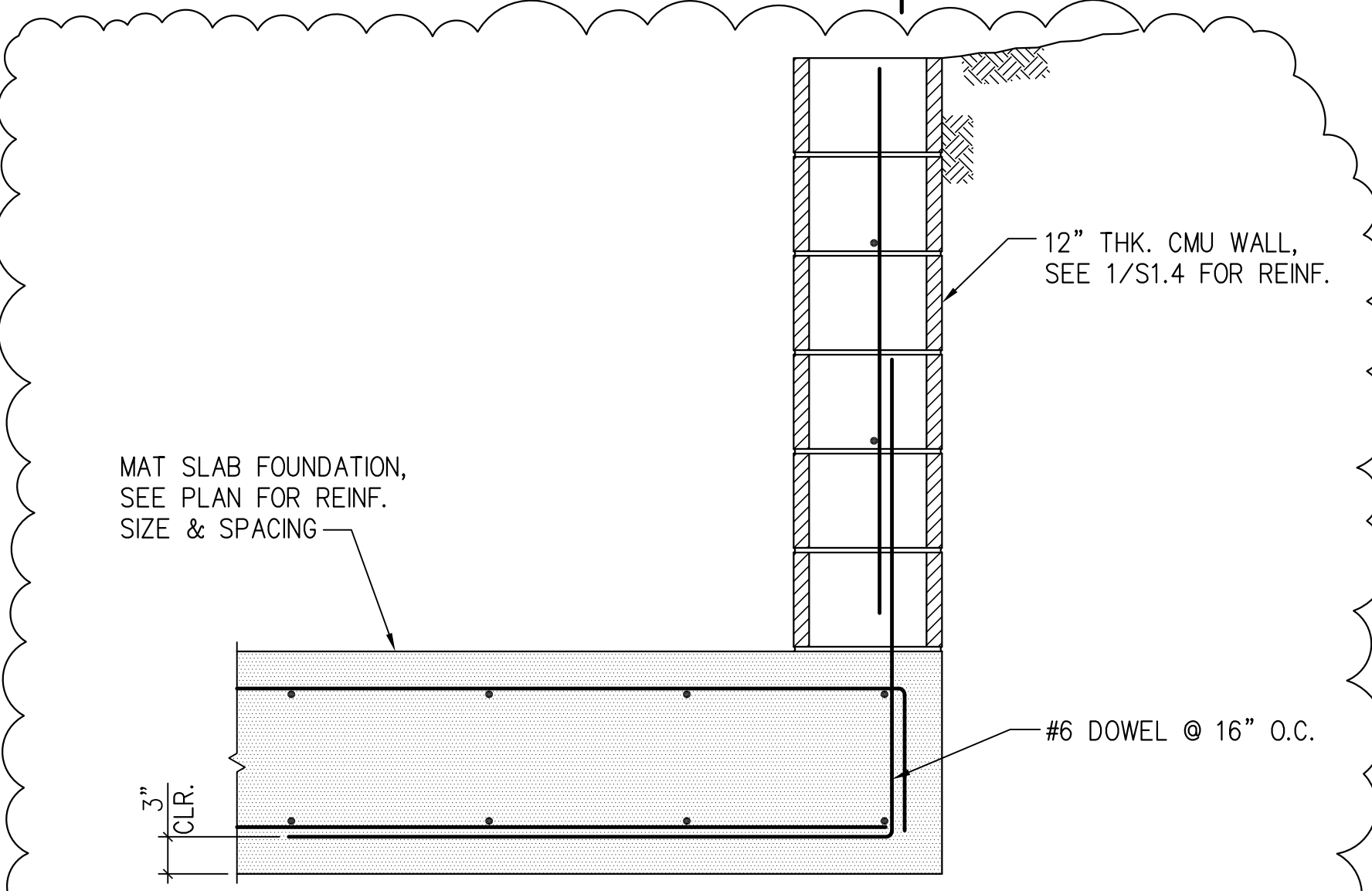
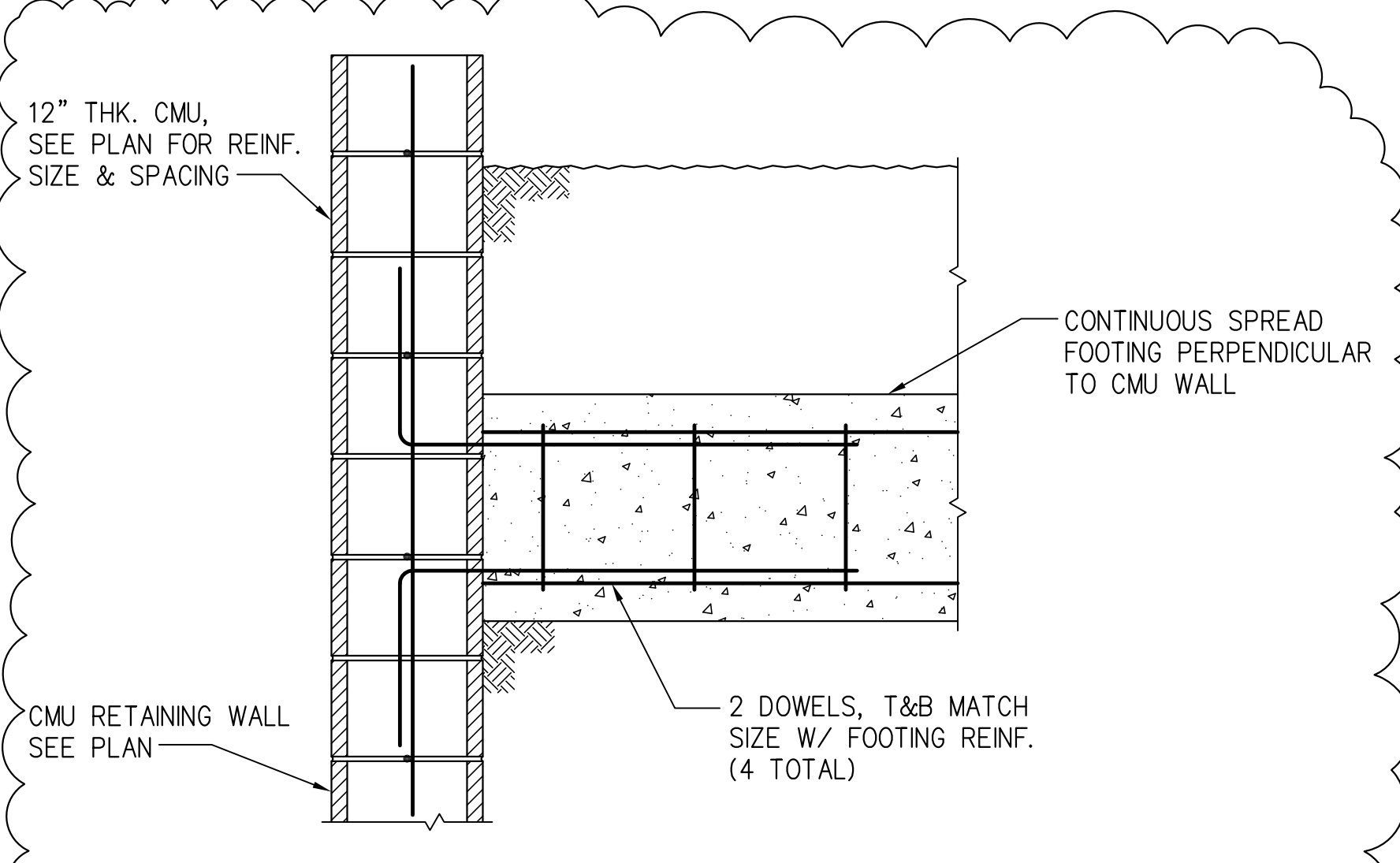


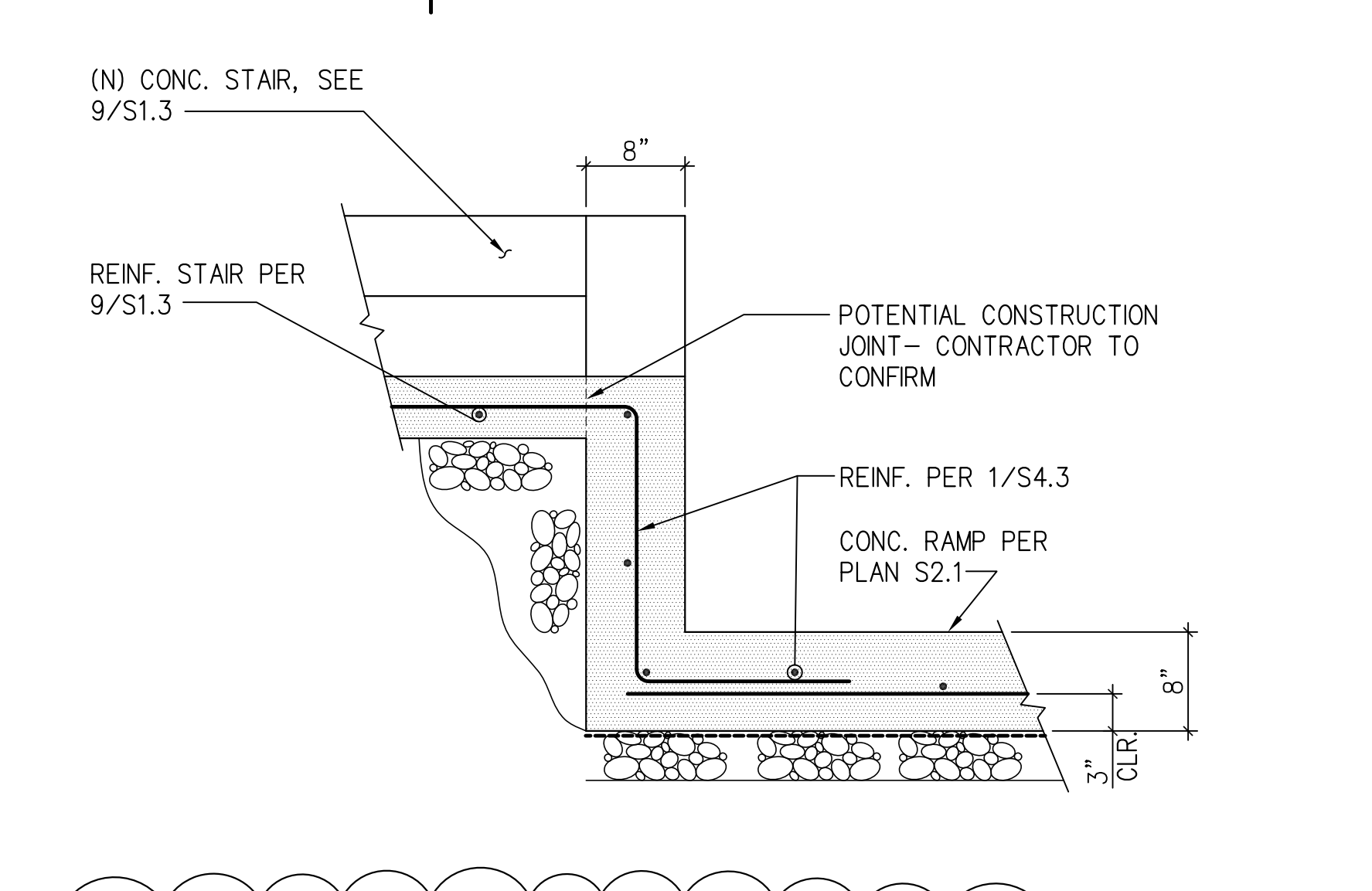
11 RETAINING WALL FOOTING TO CMU WALL AT G.L.'S C.C & 1.3 3/4" = 1'-0"



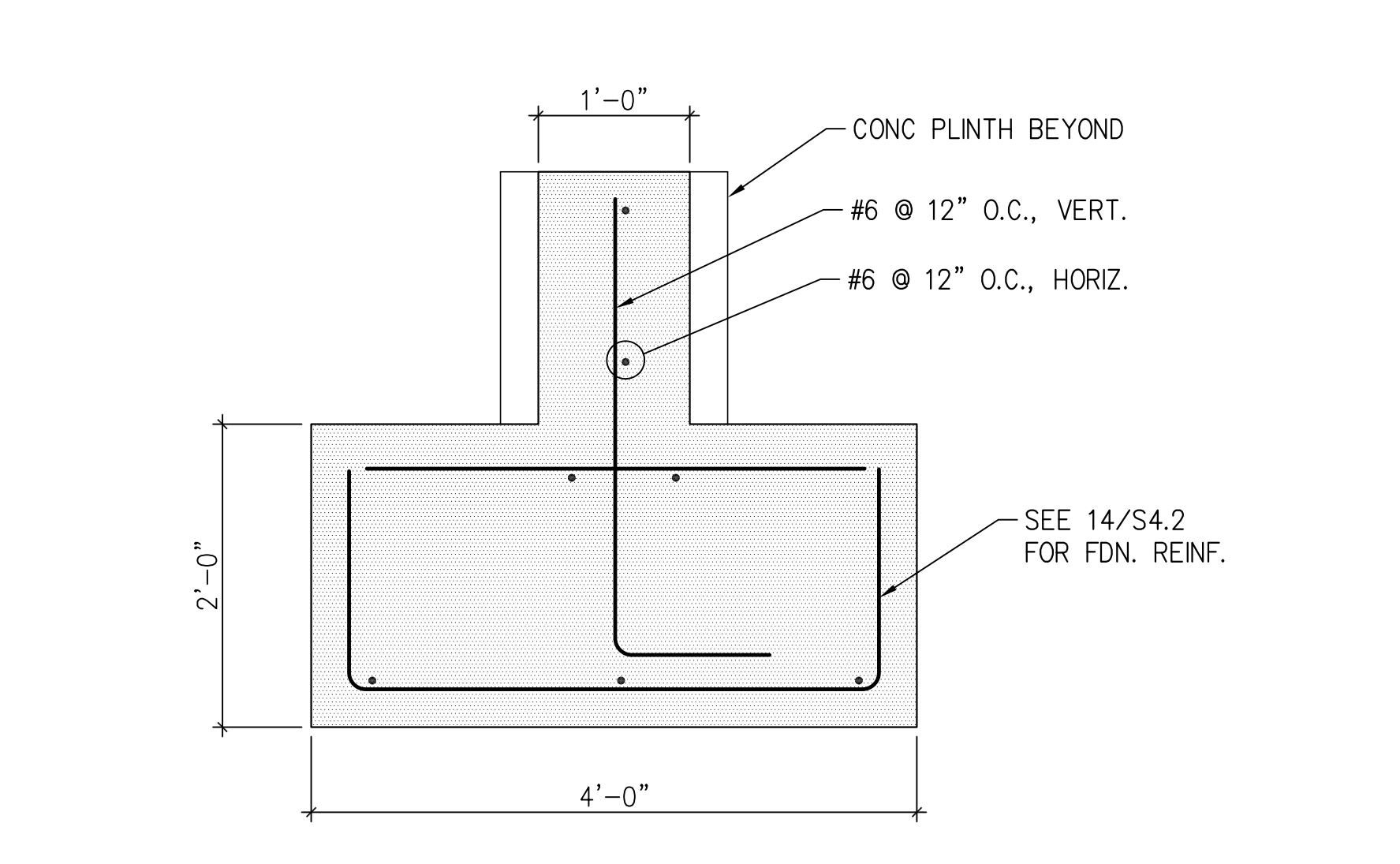
8 RETAINING WALL ON MAT SLAB BELOW PLAY AREA 1" = 1'-0"



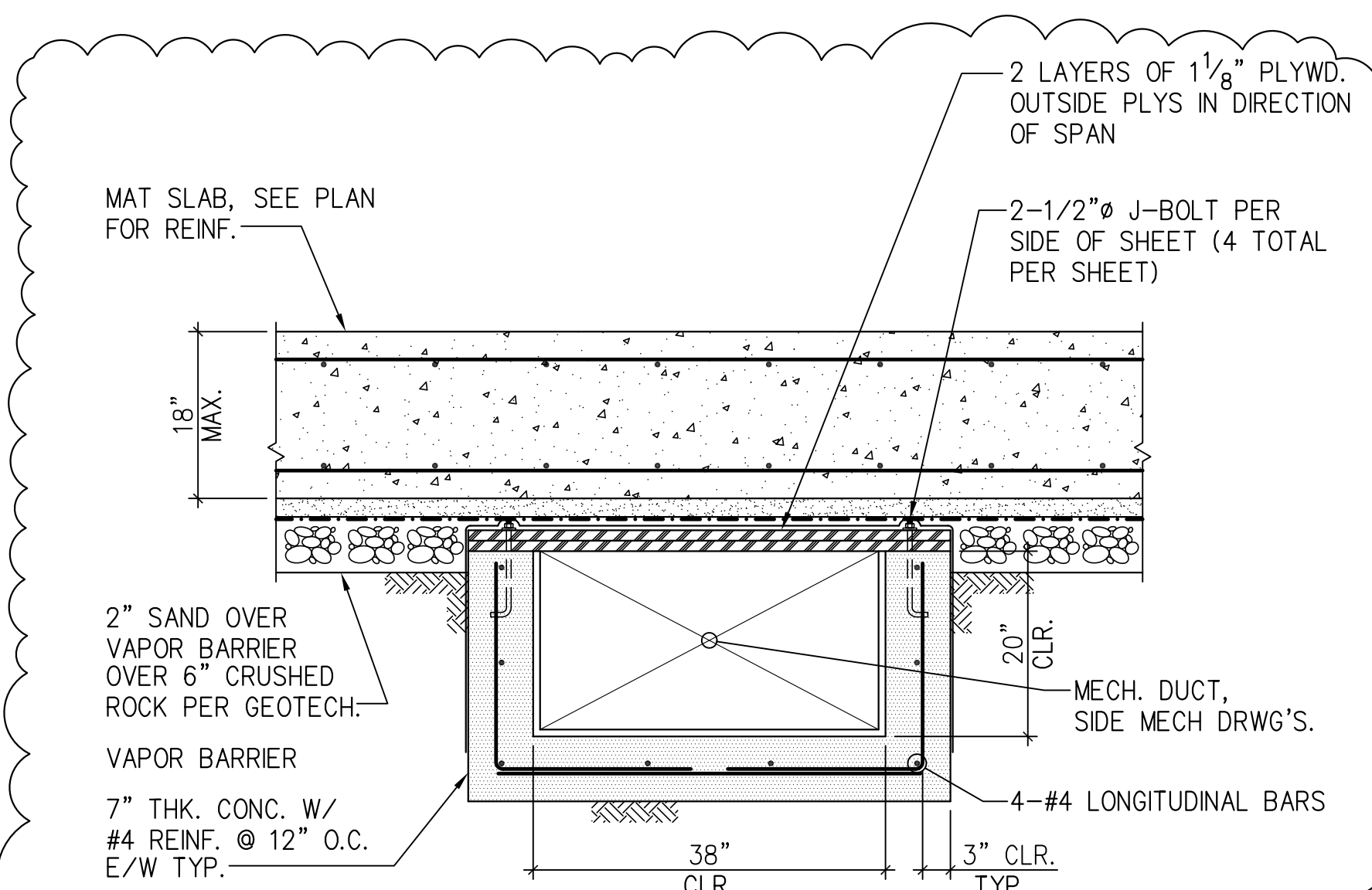
7 CONC. CONTINUOUS SPREAD FTG. INTO SIDE OF CMU RETAINING WALL 1" = 1'-0"



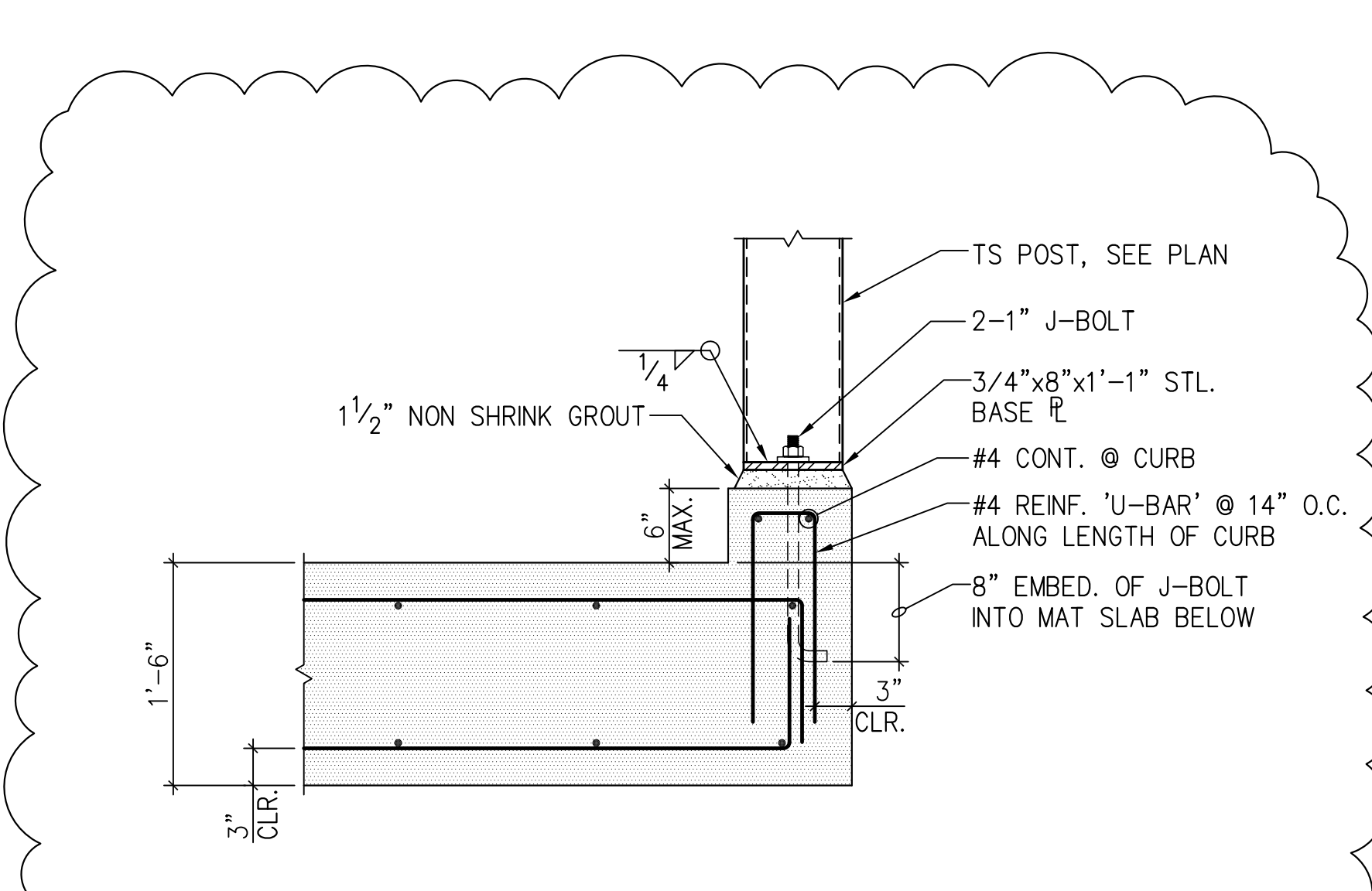
4 STAIR TO RAMP DETAIL 1" = 1'-0"



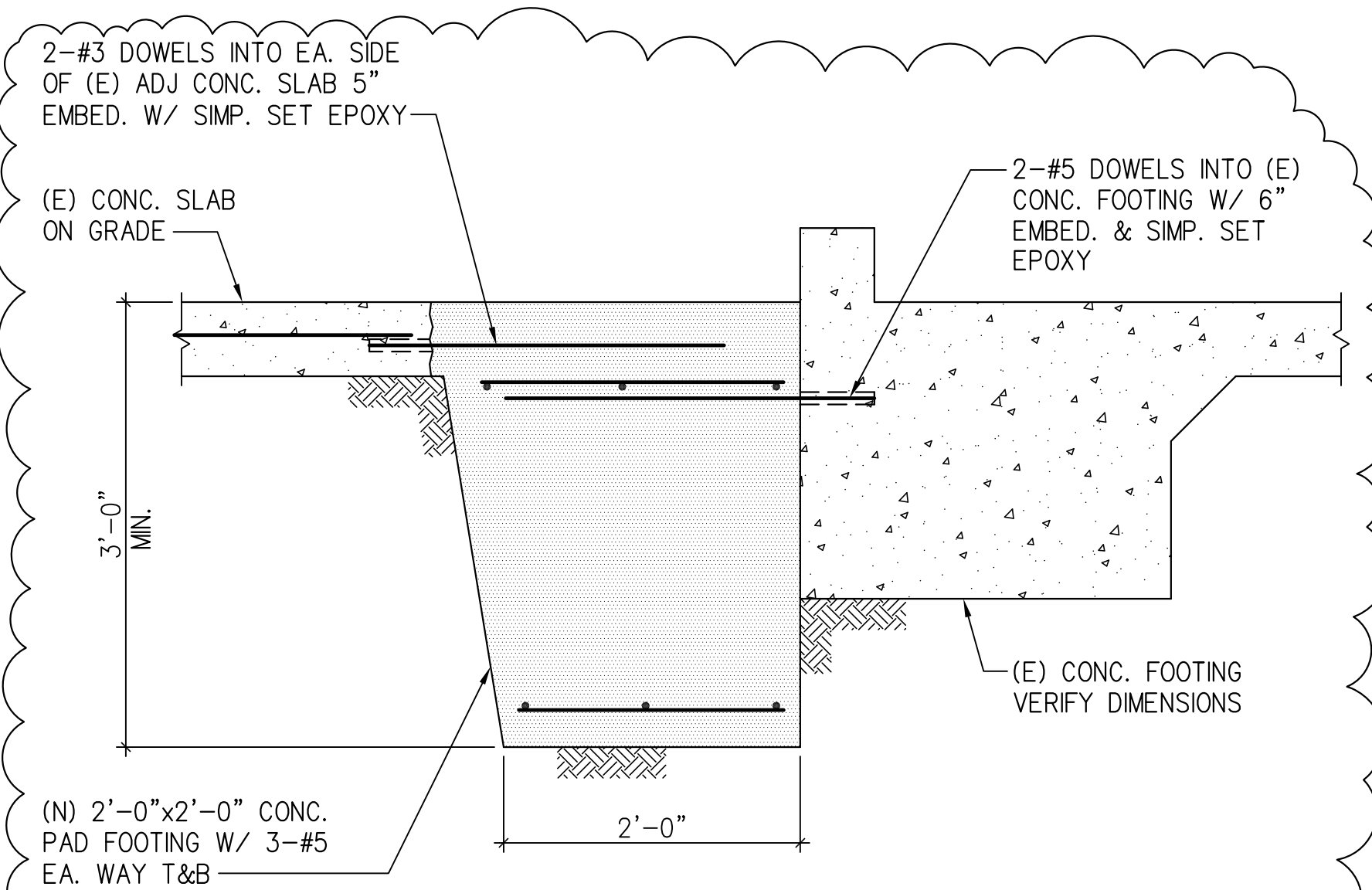
3 12" CONC. STEM WALL FOR PLAYGROUND BRACING 1" = 1'-0"



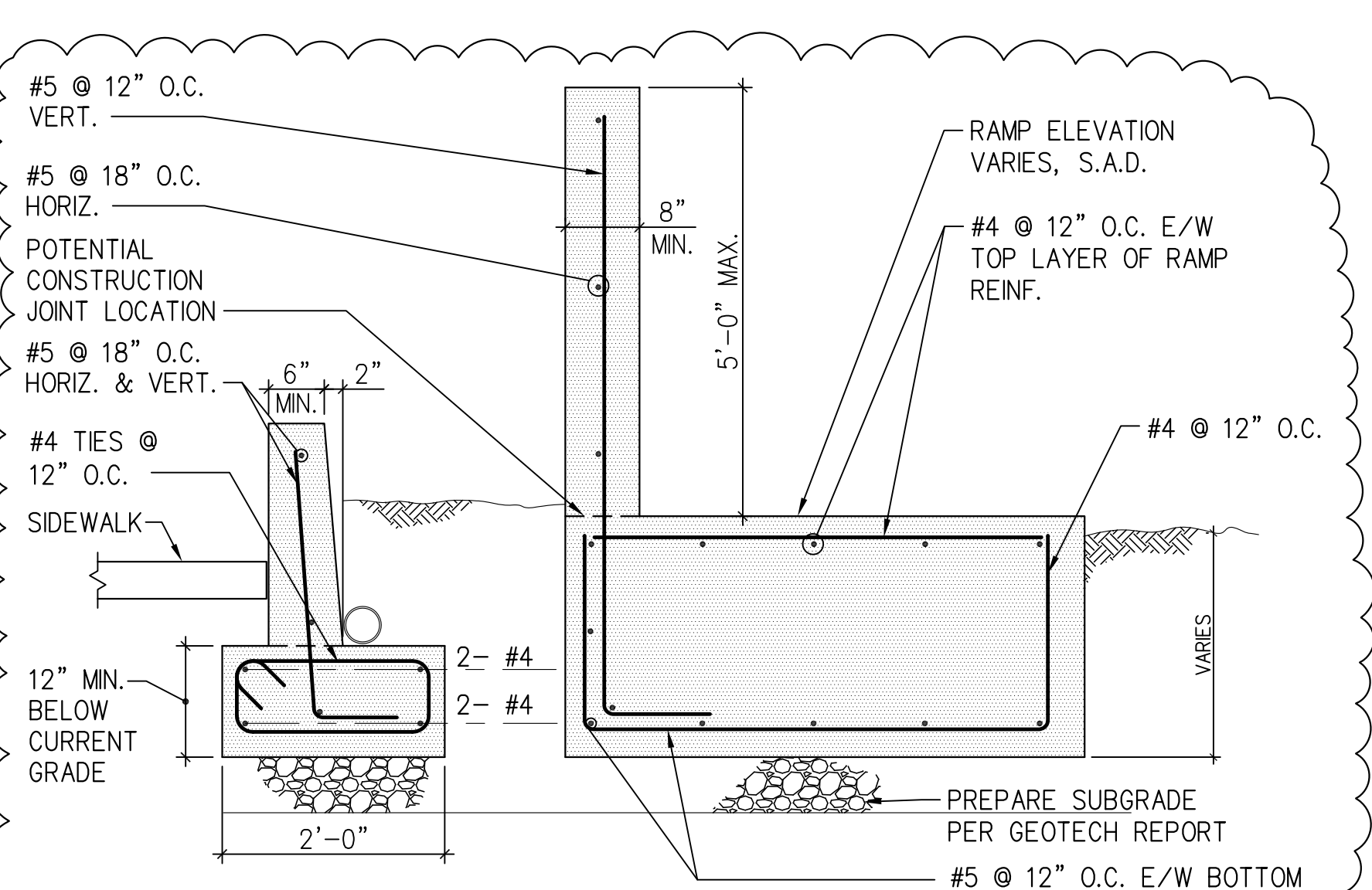
12 SECTION THRU MECHANICAL TRENCH BELOW MAT SLAB IN CHAPEL 3/4" = 1'-0"



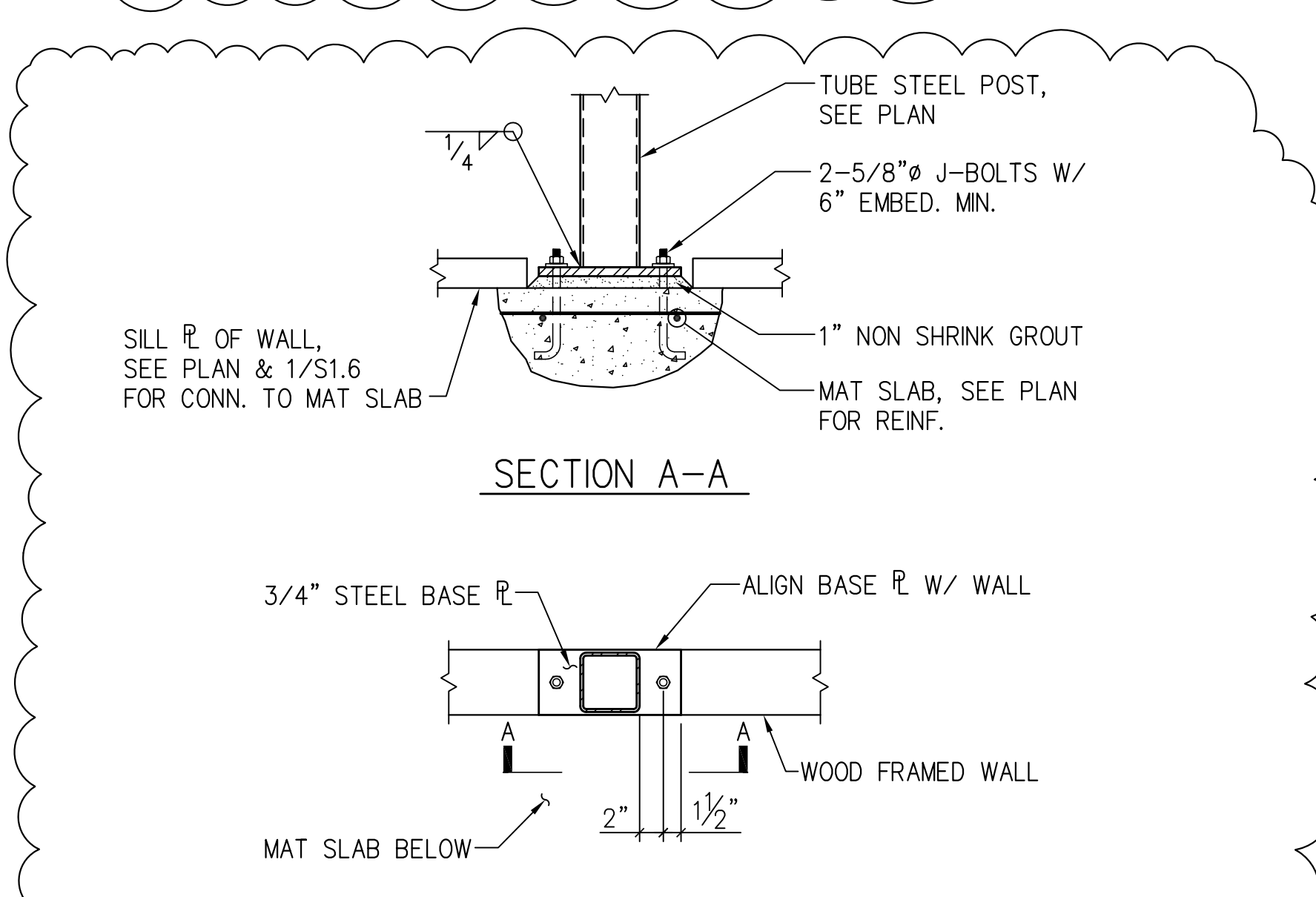
10 P3 TO CONC. CURB AT WEST SIDE OF CHAPEL 1" = 1'-0"



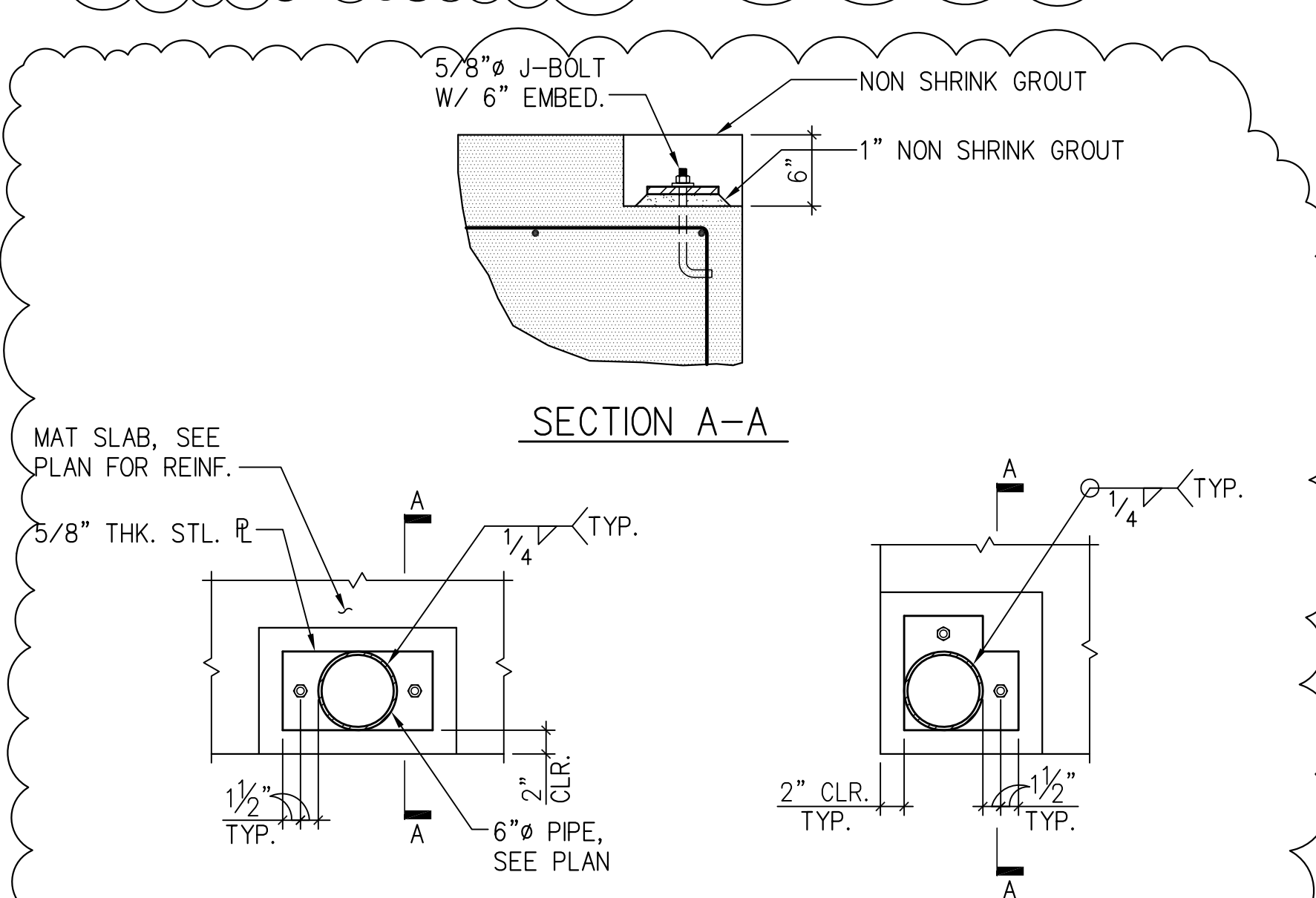
6 (N) 2'-0"x2'-0" PAD FOOTING ADJACENT TO (E) CONC. FOOTING 1" = 1'-0"



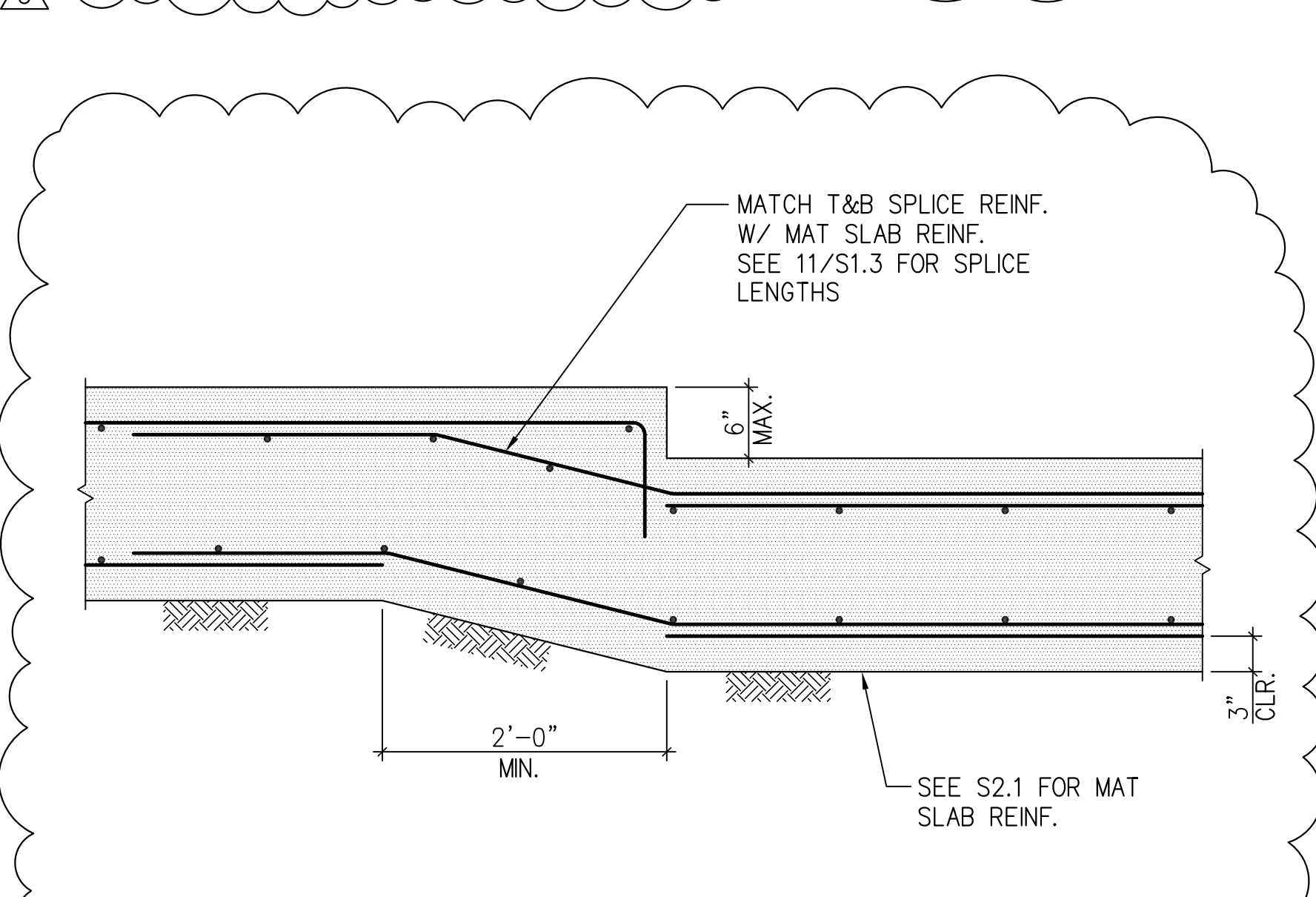
2 SECTION THRU EXTERIOR RAMP 3/4" = 1'-0"



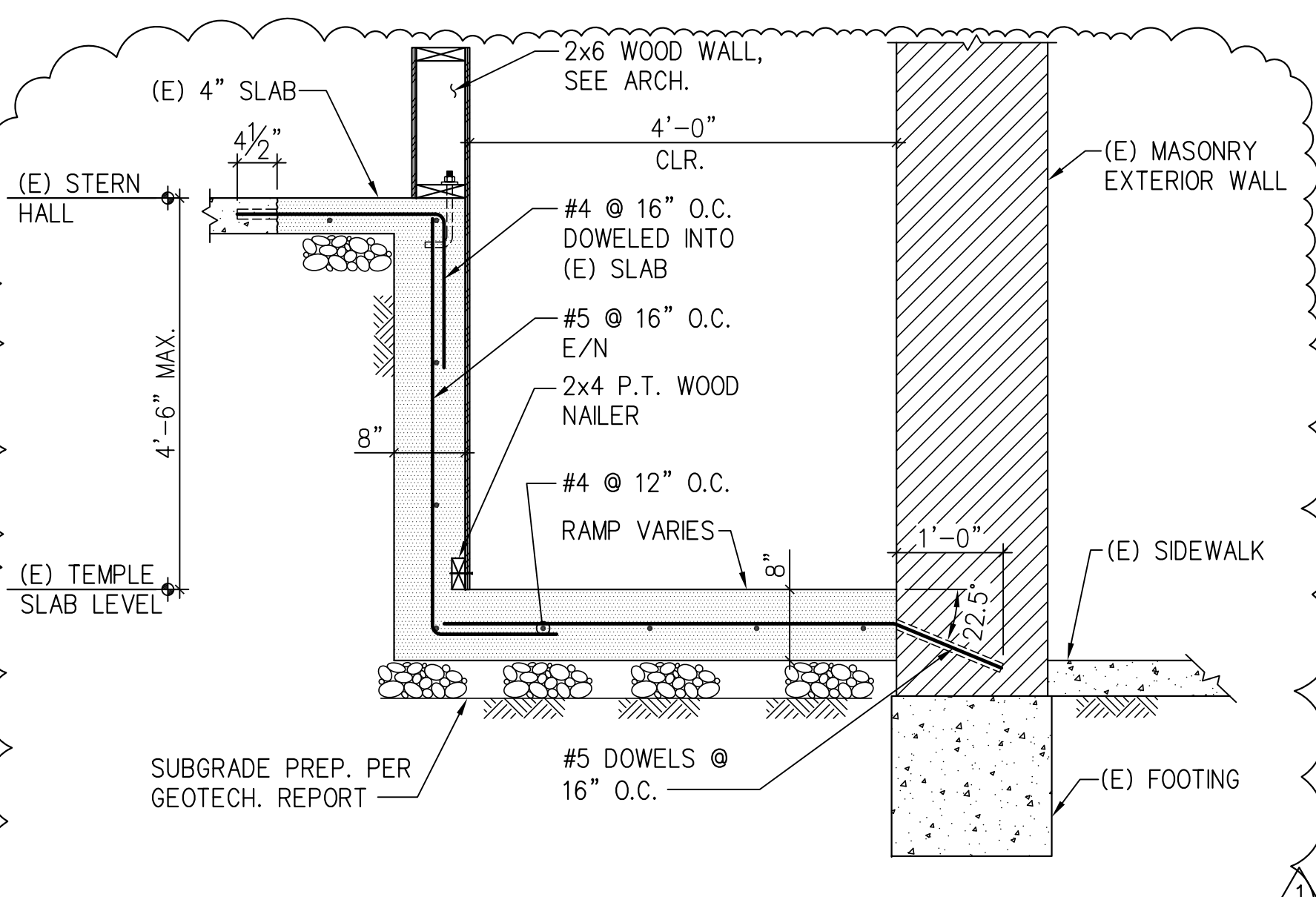
13 BASE OF TUBE STL. POST WITHIN WALL 1" = 1'-0"



9 PIPE COL. BASE TO EDGE OF MAT SLAB 1" = 1'-0"



5 CHANGE IN HEIGHT OF TOP OF MAT SLAB AT ENTRY ARCADE 1" = 1'-0"



1 SECTION THRU (N) RAMP @ STERN HALL 3/4" = 1'-0"