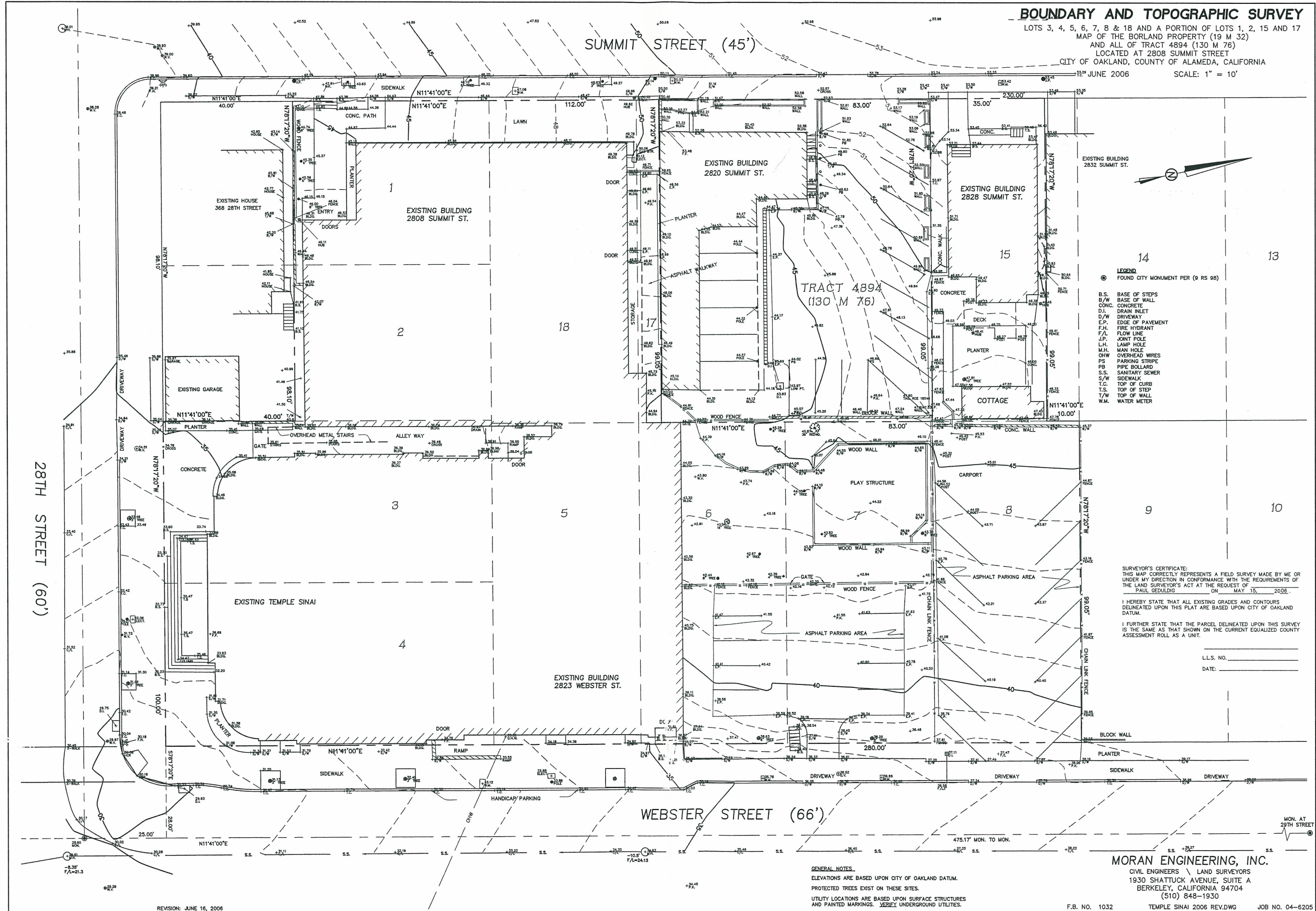


**BOUNDARY AND TOPOGRAPHIC SURVEY**

LOTS 3, 4, 5, 6, 7, 8 & 18 AND A PORTION OF LOTS 1, 2, 15 AND 17  
 MAP OF THE BORLAND PROPERTY (19 M 32)  
 AND ALL OF TRACT 4894 (130 M 76)  
 LOCATED AT 2808 SUMMIT STREET  
 CITY OF OAKLAND, COUNTY OF ALAMEDA, CALIFORNIA

JUNE 2006

SCALE: 1" = 10'



- LEGEND**
- FOUND CITY MONUMENT PER (9 RS 98)
  - B.S. BASE OF STEPS
  - B/W BASE OF WALL
  - CONC. CONCRETE
  - D.I. DRAIN INLET
  - D/W DRIVEWAY
  - E.P. EDGE OF PAVEMENT
  - F.H. FIRE HYDRANT
  - F/L FLOW LINE
  - J.P. JOINT POLE
  - L.H. LAMP HOLE
  - M.H. MAN HOLE
  - OHW OVERHEAD WIRES
  - PS PARKING STRIPE
  - PB PIPE BOLLARD
  - S.S. SANITARY SCHER
  - S/W SIDEWALK
  - T.C. TOP OF CURB
  - T.S. TOP OF STEP
  - T/W TOP OF WALL
  - W.M. WATER METER

**SURVEYOR'S CERTIFICATE:**  
 THIS MAP CORRECTLY REPRESENTS A FIELD SURVEY MADE BY ME OR UNDER MY DIRECTION IN CONFORMANCE WITH THE REQUIREMENTS OF THE LAND SURVEYOR'S ACT AT THE REQUEST OF PAUL GEDULDIG ON MAY 15, 2006.

I HEREBY STATE THAT ALL EXISTING GRADES AND CONTOURS DELINEATED UPON THIS PLAT ARE BASED UPON CITY OF OAKLAND DATUM.

I FURTHER STATE THAT THE PARCEL DELINEATED UPON THIS SURVEY IS THE SAME AS THAT SHOWN ON THE CURRENT EQUALIZED COUNTY ASSESSMENT ROLL AS A UNIT.

LLS. NO. \_\_\_\_\_  
 DATE: \_\_\_\_\_

**GENERAL NOTES:**  
 ELEVATIONS ARE BASED UPON CITY OF OAKLAND DATUM.  
 PROTECTED TREES EXIST ON THESE SITES.  
 UTILITY LOCATIONS ARE BASED UPON SURFACE STRUCTURES AND PAINTED MARKINGS. VERIFY UNDERGROUND UTILITIES.

**MORAN ENGINEERING, INC.**  
 CIVIL ENGINEERS \ LAND SURVEYORS  
 1930 SHATTUCK AVENUE, SUITE A  
 BERKELEY, CALIFORNIA 94704  
 (510) 848-1930

F.B. NO. 1032      TEMPLE SINAI 2006 REV.DWG      JOB NO. 04-6205

REVISION: JUNE 16, 2006

7/10/2006 2:54:58 PM