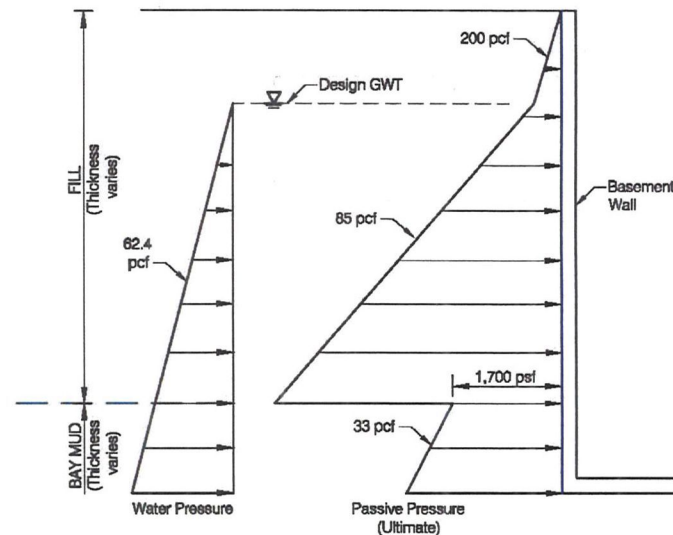


A. PASSIVE PRESSURE (ULTIMATE) UNDER SEISMIC CONDITION WITH IMPROVED FILL (UPPER 15 FEET)



B. PASSIVE PRESSURE (ULTIMATE) UNDER SEISMIC CONDITION WITH LIQUEFIABLE FILL

NOT TO SCALE

Notes:

1. Passive pressure presented are ultimate. For active/at-rest pressure, see Figure 39.
2. Design ground water table (GWT) is at Elevation 95 feet.
3. Pcf denotes pounds per cubic foot; psf denotes pounds per square foot.
4. Thickness of fill and Bay Mud varies throughout site. See boring logs for details.
5. Improved fill assumed the upper 15 feet of fill has been improved to mitigate liquefaction and lateral spreading.

**BLOCK 29-32
MISSION BAY**
San Francisco, California

**PASSIVE RESISTANCE
FOR BASEMENT WALLS**

Date 12/20/11 | Project No. 750603902 | Figure 40

Treadwell & Rollo
A LANCON COMPANY